

## Power Clamps

Steel, Pneumatic, for Centered Clamping

### SPECIFICATION

#### Type

Type **BC**: 2 clamping arms vertical for centred clamping

Steel C45

Chemically nickel plated **NC**

Max. pressure 10 bar

### INFORMATION

The clamping forces  $F_s$  of power clamps GN 866 are directed inwards at the clamping arms.

The maximum clamping moment of the power clamps GN 866 is reached once the clamping bar is at the end of its stroke. For this reason the working stroke should be completed as closely as possible to the stroke end.

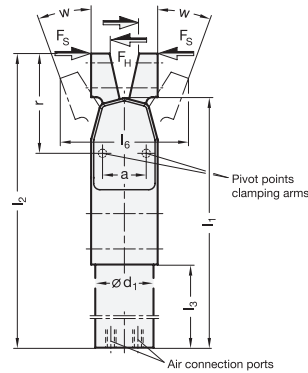
- Information for pneumatic fastening clamps (see page 1632)

### ON REQUEST

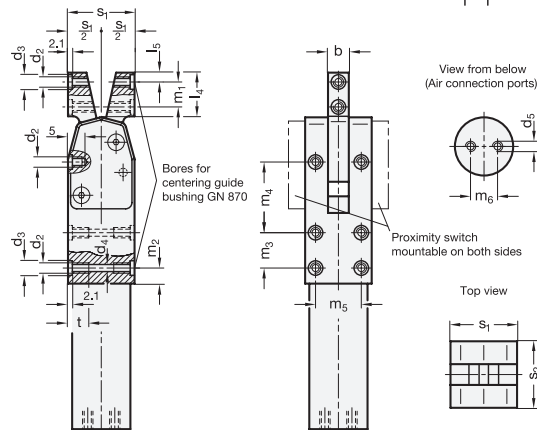
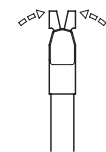
- With anti-stick coating for protection against welding spray and corrosion

### TECHNICAL INFORMATION

- ISO-Fundamental Tolerances (see page A21)
- List of pneumatic clamps (see page )



Operating principle



View from below (Air connection ports)

Proximity switch mountable on both sides

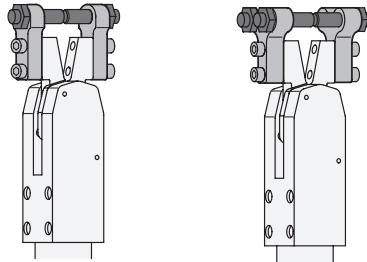
Top view

### GN 866

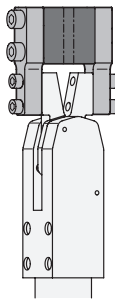
Description	Size	max. clamping moment in Nm at 6 bar	$F_s$ in N	$F_H$ in N	a	b	d1	d2	d3	d4	d5	l1	l2	l3	l4	l5	l6	m1	m2	m3	m4	m5	m6	r	s1	s2	t	w	$\Delta$
GN 866-20-BC-NC	20	60	630	1150	21	10	28	M 5	7	4.2	M 5	138	160	57.5	24.5	5	89	12	7.5	17	-	22	13	48	32	38	13	66°	650
GN 866-32-BC-NC	32	150	1110	1520	31	12	40	M 6	9	5	G 1/8	206	237	91	31	6	72.5	18	10	25	51	30	22	67.5	42	42	15	14°	1400
GN 866-40-BC-NC	40	300	1800	2000	37	16	50	M 8	11	6.8	G 1/8	244	282	104	38	7.5	89.5	22	13	30	62	37	25	82.5	52	52	18	14°	2900

Installation examples

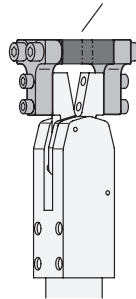
Holder for clamping bolts GN 867



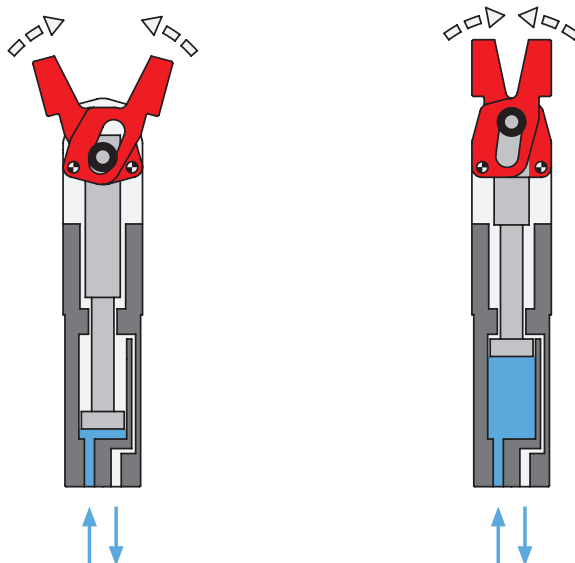
Holder for clamping jaws GN 868



Clamping jaws GN 872



Principle of operation



Toggle, power and hook clamps 14